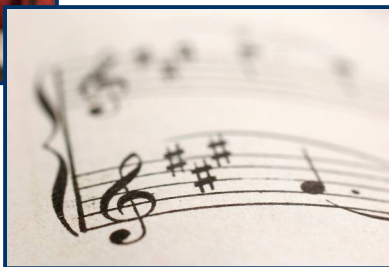


Teacher Education: Vocal Music Subject Endorsement

Why should I choose the Teacher Education program? This program is designed for students who desire to teach in public schools or private schools. Because of the growing Christian school movement and its need for teachers who have developed a Christian philosophy of education and have integrated their knowledge of the Bible with professional and general knowledge subjects, Grace University launched this program in 1998. Grace also recognized that qualified Christians can have a significant impact on society by serving as educators in public settings as well as other educational settings such as private sectarian or religious schools. The program has standard approval status with the Nebraska Department of Education (NDE). The goal of the program is to prepare educators in defined areas of endorsement who meet the certification requirements of the Nebraska Department of Education as well as the Association of Christian Schools International (ACSI).

What type of degree will I earn at Grace University if I enroll in this program? Graduates of the Teacher Education program will earn a Bachelor of Science degree.

What kind of jobs would be available to me after I graduate from Grace University with this major? Graduates with this degree may teach vocal music in kindergarten through grade 6 or grades 7 through 12.



For more information on this program, contact the Admissions Office at 1.800.383.1422 or Admissions@GraceUniversity.edu.

www.GraceUniversity.edu

Program of Study

Total Degree Credits	134
<u>Bible & Theology Requirements</u>	
BS 101 Old Testament Survey	4
BS 102 New Testament Survey	4
BS 103 Hermeneutics & Bible Study Methods	3
BS 110 Evangelism & Spiritual Life	2
BS 406 Romans	3
BS/TH xxx Bible <u>or</u> Theology electives	7
HU 414 Ethics	3
TH 200 Survey of Theology	2
TH 203 Theology of Church Mission	2
Total Bible/Theology Credits	30
<u>General Education Requirements</u>	
EN 101 College Composition 1	3
EN 102 Creative Writing	3
HU 382 American Literature	3
MA 201/211 Choose College Algebra <u>or</u> Statistics	3
PE 101 Introduction to Health & Wellness	2
PE xxx PE Electives	2
PSY 101 General Psychology	3
PSY 211 Child and Adolescent Development	3
SCI xxx Science Elective	3
SP 120 Oral Communications	3
SS 101 Freshmen Seminar	1
SS 400 Senior Integration	1
SS xxx Social Science Electives	6
Total General Education Credits	36
<u>Professional Requirements</u>	
ED 200 Orientation and Field Experience	2
ED 201 Educational Psychology	3
ED 203 Pluralism & Cultural Diversity	2
ED 214 Elem & MS Music Methods in Education	2
ED 300 Practicum in Education 1	0
ED 301 Assessment, Tests, & Measurements	2
ED 302 Introduction to Special Education	3
ED 350 Practicum in Education 2	0
ED 400 Practicum in Education 3	0
ED 423 Practicum in Special Education	0
ED 424 Student Teaching Experience	13
ED 450 Practicum in Education 4	0
ED 316 Instructional Technology	3
ED 402 History & Philosophy of Education	3
MU P080 Basic Piano Fundamentals Class	1
MU P090 Basic Piano Fundamentals Class	1
MU P101 Applied Piano	1
MU P102 Applied Piano	1
MU V101-202 Applied Voice	4
MU 010-080 Performance Hour	0
MU 121 Comprehensive Musicianship 1	4
MU 122 Comprehensive Musicianship 2	4
MU 313 Conducting 1	2
MU 314 Conducting 2	2

(Continued on reverse.)



Teacher Education: Vocal Music Subject Endorsement Continued

MU 335 Survey of Music History & Literature 1	3
MU 336 Survey of Music History & Literature 2	3
MU 350 Children/Youth Choir Methods and Materials	2
MU 422 Choral & Instrumental Arranging	3
MU 450 Vocal Literature	1
MU 470 Choral Literature	1
MU xxx Ensemble Options	2
Total Professional Requirements	68

Servant Leadership Training*** 8 Semesters
Grace L.I.F.E. *** 8 Semesters

***For specific requirements, please refer to the Grace University Student Handbook.

Fall 2008